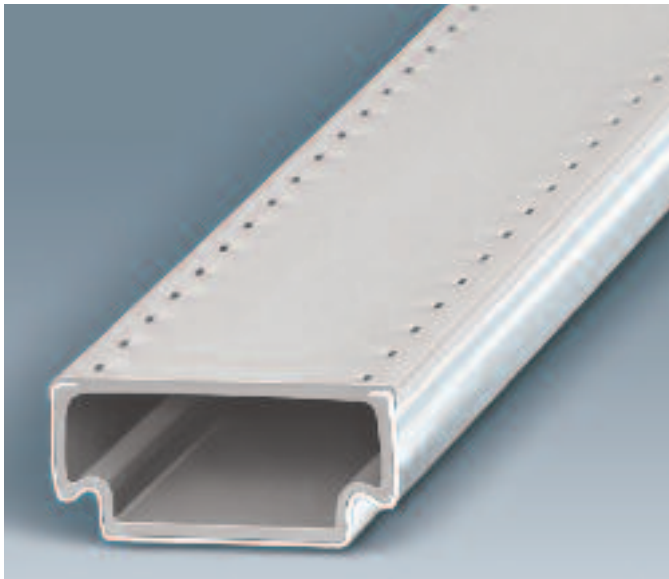


THE BATTLE  
FOR ENERGY  
INDEPENDENCE  
IS BEING  
WAGED  
BETWEEN  
TWO PANES  
OF GLASS.

Energy costs are continuing to rise with no end in sight. You have two choices: surrender or fight back. Lockheed's revolutionary TGI® Warm Edge IG Spacer is leading the charge. TGI® is independently tested to be the warmest edge insulated glass spacer available and is standard in all Lockheed's family of vinyl window systems.

We offer a wide range of products that meet the criteria for the 2009/2010 Stimulus Act tax credit. See reverse side for all of the comprehensive test results for our products or call Customer Service for more information at 1-800-537-3061.


Partner with Lockheed Window Corp. to save on energy costs and enjoy the tax rebate savings by choosing ENERGYSTAR® qualified windows and doors.



TGI® Warm Edge IG Spacer

  
DH U-Value .30 with  
Low E Glass and Argon Gas

  
DH U-Value .30 with  
Low E Glass and Argon Gas

  
DH U-Value .31 with  
Low E Glass and Argon Gas

  
Sliding Patio Door U-Value .29 with  
"Stimulus 366" Low E Glass/Argon Gas



U-Value .28 with  
Low E Glass and Argon Gas



WINDOW CORP.  
"Where Quality Rules"  
Since 1955



P. O. BOX 166, ROUTE 100 | PASCOAG, RHODE ISLAND 02859

TEL: (401) 568-3061 | FAX: (401) 568-2273 | Toll Free: (800) 537-3061 | [www.lockheedwindow.com](http://www.lockheedwindow.com)



WINDOW CORP.  
 "Where Quality Rules"  
 Since 1955

TECHNOFORM GLASSINSULATION



TGI® Warm Edge IG Spacer

**ENERGYSTAR®/AAMA PERFORMANCE CHART**

MODEL & SERIES  Specifications subject to change without notice.	*Thermal Values Technoform TGI® Warm Edge IG Spacer						**Solar Heat Gain Coefficient (SHGC)				**Visible Transmittance (VT)				**** Condensation Resistance Factor (CRF)		STRUCTURAL AAMA RATING ***			
	CLEAR		LOW E		LOW E/ ARGON		WITH GRIDS		WITHOUT GRIDS		WITH GRIDS		WITHOUT GRIDS		LOW E	LOW E/ ARGON	AIR @ 25 MPH	WATER RESISTANCE (P.S.F.)	STRUCTURAL (P.S.F.)	RATING
	U-VALUE	R-VALUE	U-VALUE	R-VALUE	U-VALUE	R-VALUE	LOW E	LOW E/ ARGON	LOW E	LOW E/ ARGON	LOW E	LOW E/ ARGON	LOW E	LOW E/ ARGON						
<b>VinyLock® Double Hung</b>	.48	2.08	.35	2.86	.31	3.23	.27	.27	.30	.30	.49	.49	.56	.56	55	56	.23	6.06	60.19	H-LC-40
<b>VinyLock® Slider</b>	.48	2.08	.35	2.86	.31	3.23	.27	.27	.30	.30	.49	.49	.55	.55	56	59	.14	5.43	52.66	HS-LC-25
<b>VinyLock® Fixed Picture</b>	.46	2.17	.32	3.13	.29	3.45	.28	.28	.31	.31	.51	.51	.57	.57	58	62	N/A	N/A	N/A	N/A
<b>Monarch™/Nucon® Double Hung</b>	.46	2.17	.34	2.94	.30	3.33	.27	.26	.30	.29	.49	.49	.55	.55	55	56	.09	8.36	67.71	H-LC-45
<b>Monarch™/Nucon® Twin Integral Mullion Double Hung</b>	.46	2.17	.34	2.94	.30	3.33	.27	.26	.30	.29	.49	.49	.55	.55	55	56	.21	6.90	67.71	LC-PG50
<b>Monarch™/Nucon® Slider</b>	.46	2.17	.34	2.94	.30	3.33	.26	.26	.29	.28	.47	.47	.53	.53	56	59	.08	8.36	60.19	HS-LC-40
<b>Monarch™/Nucon® Fixed Picture</b>	.46	2.17	.32	3.13	.28	3.57	.29	.29	.32	.32	.53	.53	.59	.59	57	60	.01	12.12	112.85	F-LC-75
<b>VinylPro 2000™/Nucon® Awning</b>	.43	2.33	.31	3.23	.28	3.57	.24	.24	.27	.26	.44	.44	.49	.49	53	56	.24	11.29	60.0	AP-LC-40
<b>VinylPro 2000™ / Nucon® Casement</b>	.42	2.38	.31	3.23	.28	3.57	.24	.24	.27	.26	.44	.44	.49	.49	57	60	.01	12.00	90.00	C-C-60
<b>VinylPro 2000™ Hopper</b>	.43	2.33	.31	3.23	.28	3.57	.24	.24	.26	.26	.44	.44	.48	.48	56	60	N/A	N/A	N/A	N/A
<b>VinylPro 2000™ Fixed Picture</b>	.44	2.27	.31	3.23	.27	3.70	.28	.28	.31	.31	.51	.51	.57	.57	56	60	N/A	N/A	N/A	N/A
<b>Nucon® Sliding Patio Door</b>	.46	2.17	N/A	N/A	.29	3.44	N/A	.30	N/A	.34	N/A	.51	N/A	.58	N/A	59	.13	7.50	52.5	SGD-R-35
<b>Nucon® Sliding Patio Door "Stimulus 366 Package"</b>	.46	2.17	N/A	N/A	.29	3.44	N/A	.20	N/A	.22	N/A	.46	N/A	.52	N/A	59	.13	7.50	52.5	SGD-R-35
<b>Nucon® Swing Patio Door</b>	.44	2.27	N/A	N/A	.30	3.33	N/A	.25	N/A	.28	N/A	.41	N/A	.48	N/A	60	.05	5.25	82.5	HGD-LC-35

NOTE: Low "E" coating is on the number "2" glass surface when viewed from the exterior. U-values noted above are reflective of either PPG Solarban 60® or AFG Ti-AC-36 Low "E" glass.

\* "U" Value in accordance with NFRC 100-2004: Procedure for determining fenestration product U-factors.

\*\* Solar Heat Gain Coefficient and Visible Transmittance in accordance with NFRC 200-2004: Procedure for determining fenestration product Solar Heat Gain Coefficient and Visible Transmittance at normal incidence.

\*\*\* AAMA Rating in accordance with AAMA/WDMA/CSA 101/I.S. 2/A440-05 or AAMA/WDMA/CSA 101/I.S. 2/A440-08

\*\*\*\* Condensation Resistance Factor in accordance with NFRC 500-2004: Procedure for determining fenestration product condensation.