

Lockheed Window Corp.

**Series 6125
Projected Window System**

FEATURES & BENEFITS

Main frame and ventilators are constructed of thermally broken extruded aluminum.

.125" wall thickness on all frame and ventilator members.

2 1/2" frame depth.

Ventilator is flush with main frame for an aesthetically pleasing design.

Main frame and ventilators are neatly mitered, hydraulically crimped and epoxy welded.

Ventilators consist of double foam filled bulb weatherstripping for minimum air infiltration and maximum water seal.

Ventilator hinges are heavy-duty four (4) bar stainless steel with solid brass adjustable friction shoe for smooth long lasting performance.

Cam locking handles and keepers are cast white bronze.

1" insulated glazed consisting of two (2) pieces of DSB clear annealed glass with a 3/4" air space.*

Optional screens are manufactured from extruded aluminum. Screenwire is charcoal black fiberglass.

Project-in window screens shall be flat and fastened from the exterior.

Project-out window screens shall be sliding wicket and fastened from the interior.

Standard stocked finishes are:

- Clear anodized finish – 204 R1 Class 2
- Dark Bronze anodized finish – 313 R1 Class 1
- Duracron® paint enamel – White, Bronze or Hartford Green**

Complete line of accessories available to accommodate most installation applications.

* Custom glazing options available by special quote.

**Custom color options available by special quote.



LOCKHEED
WINDOW CORP.
"Where Quality Rules"
Since 1955

Route 100 • P.O. Box 166 • Pascoag, RI 02859
Telephone: 401-568-3061 • Fax: 401-568-2273
www.lockheedwindow.com

Series 6125 Window



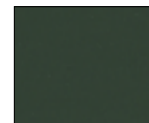
**Standard Stocked
Finishes are as
Shown:**



White



Bronze



Hartford Green



Clear Anodized



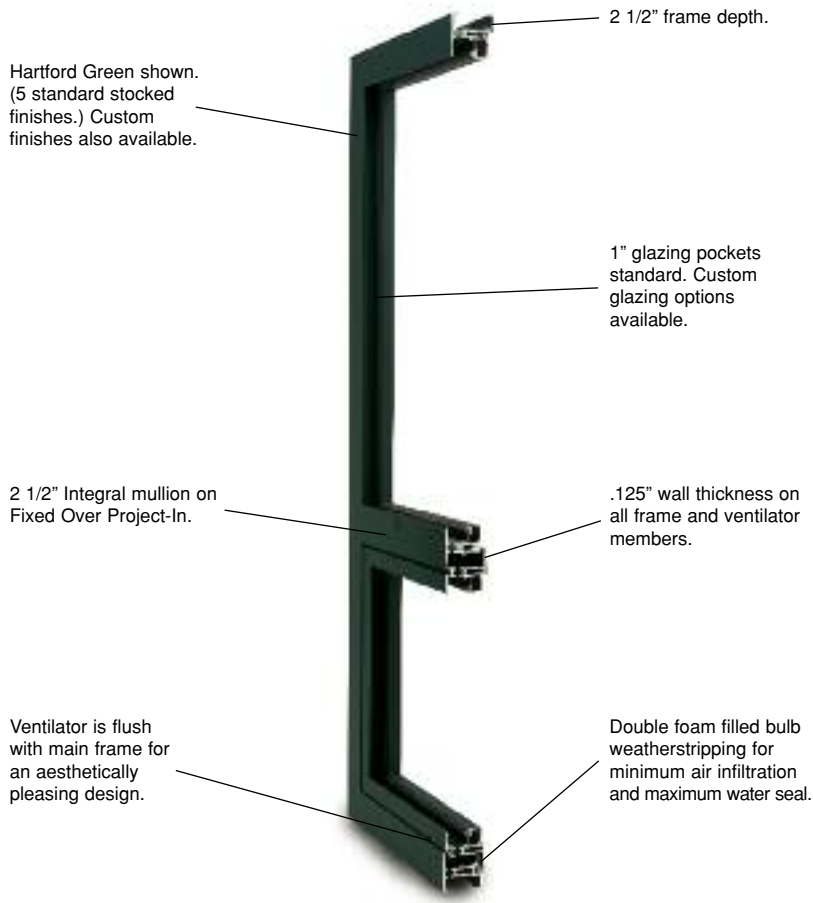
Dark Bronze Anodized

**Note: Color samples shown may differ from the actual paint coating due to the limitations of paper color chips reproduction.*

Series 6125

Partial list of projects completed through 2008

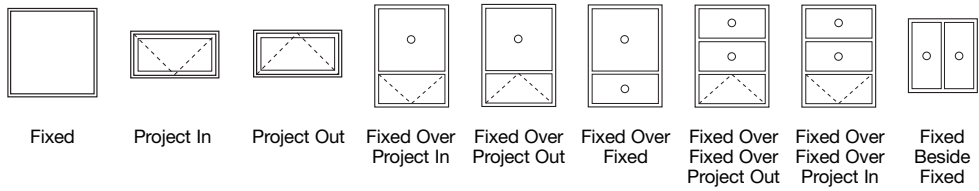
Homeless Coalition, Lynn, MA
 Charlestown High School, Charlestown, MA
 Center Elementary School, Peabody, MA
 Brown Middle School, Newton, MA
 Jennings Elementary School, Fairfield, CT
 Zervas & Mason-Rice Elementary Schools, Newton, MA
 George S. Paine School, Brockton, MA
 E.A.T.H.S., Hawthorne, MA
 Chelmsford High School, Chelmsford, MA
 Bourne High School, Bourne, MA
 Chelmsford Middle Schools, Chelmsford, MA
 Brothers of the Sacred Heart, Pascoag, RI
 Caffrey Towers 2, Brockton, MA
 Shawsheen Valley Reg. Tech. High School, Billerica, MA
 Caffrey Towers 1, Brockton, MA
 Haverhill High School, Haverhill, MA
 Byam Elementary School, Chelmsford, MA
 Harrington Elementary School, Chelmsford, MA
 Westland Elementary School, Chelmsford, MA
 Aline J. Simoens Bldg., Cranston, RI
 Kiley & West Elementary Schools, Peabody, MA
 Harborside Park LLC, E. Providence, RI
 Brandeis University, Waltham, MA
 Highland Elementary School, Westfield, MA
 Vernon Hill School, Worcester, MA
 Heard St. School, Worcester, MA
 Hosmer Elementary School, Worcester, MA
 Horace Mann Elementary School, Franklin, MA
 Memorial Spaulding Elementary School, Newton, MA
 PMI Industries, Warren, RI
 Thorndyke Road School, Worcester, MA
 Burrillville High School, Harrisville, RI
 Boland Learning Center, Springfield, MA
 Goddard School, Brockton, MA
 Lincoln School, Brockton, MA
 Brockton High School, Brockton, MA
 Doyle Elementary School, Wakefield, MA
 North Middlesex Reg. High School, Townsend, MA
 South School, Peabody, MA
 Kiley School, Peabody, MA
 Hancock School, Brockton, MA
 Ashfield School, Brockton, MA
 Freetown Elementary School, East Freetown, MA
 Memorial Jr./Sr. High School, Millbury, MA
 Lee Jr./Sr. High School, Lee, MA
 George Calef School, Johnston, RI
 Robinson School, Woonsocket, RI
 Quonset State Airport, N. Kingstown, RI
 East Jr. High School, Brockton, MA
 North Jr. High School, Brockton, MA
 Boston University-Library, Boston, MA
 Mansfield Public School, Mansfield, MA
 Gilmore School, Brockton, MA
 Huntington School, Brockton, MA
 Boston University, Boston, MA
 Health & Human Services, Coventry, RI
 West Jr. High School, Brockton, MA
 Thompson Middle School, Thompson, CT
 Jewish Community Center, Providence, RI
 Mitre Corp. "B" Building, Bedford, MA
 Dighton Elementary School, Dighton, MA
 Mansfield High School, Mansfield, MA
 East Elementary School, Sharon, MA
 West Taunton Elementary School, Taunton, MA
 Mitre Corp., Bedford, MA
 Center School, Hanover, MA
 Sturdy Memorial Hospital, Attleboro, MA
 Thornton Elementary School, Johnston, RI
 Cottage Street School, Sharon, MA
 Alcott Elementary School, Concord, MA
 George J. Peters Elementary School, Cranston, RI
 Ottoson Middle School, Arlington, MA
 Warwick Neck Elementary School, Warwick, RI
 Mobil Oil Corp., Riverside, RI
 Callahan School, Burrillville, RI



Model	AAMA Rating	Air at 50 mph Water Test Pressure (psf)	CRF	Condensation Resistance Factor	U value at 15 mph
Fixed	F-HC85	.00	15.00	52	.50
Project Out	AP-AW90	.03	12.00	52	.50
Fixed / Project In / Fixed	AP-AW70	.01	10.50	52	.50

The performance values listed above represent levels of performance based on multiple independent tests. Lockheed will update and enhance products which may affect performance and appearance. Please contact Lockheed Window Corp. for most current performance data.

Standard Configurations are as shown.
Custom configurations available by special quote.



Route 100 • P.O. Box 166 • Pascoag, RI 02859
 Telephone: 401-568-3061 • Fax: 401-568-2273
www.lockheedwindow.com