

**SHAWSHEEN ELEMENTARY SCHOOL
WILMINGTON, MA**

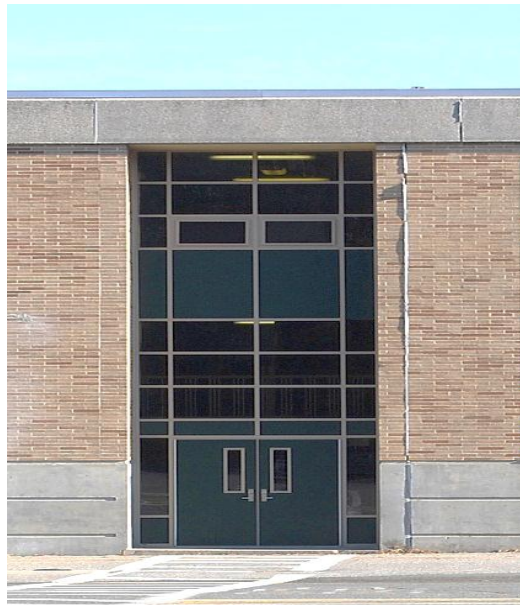
A complete renovation of the existing building has been completed for Shawsheen Elementary School.

The owner is the town of Wilmington, Massachusetts and Lockheed Window Corp. was the General Contractor. The Architect was Russo Barr Associates, Inc. of Burlington, Massachusetts.

The school serves grades one through three, with twenty-three classes.

DECEMBER

PROJECT HIGHLIGHT



A total of 84 multi-story openings and 25 single level punched openings were replaced utilizing Lockheed Window Corp.'s Series 6125 projected window systems. All windows were glazed with 1" insulated metal panels and 1" insulated glass with project-in sashes. All aluminum window framing was furnished with a PPG Kynar painted finish in Portabello. All the insulated metal panels and aluminum louvers were provided in a Hartford Green color. The majority of the exterior entrances were also replaced with Special-Lite SL-20 FRP doors in several different colors and were installed into new EFCO 5600 curtainwall framing systems.

Lockheed Window Corp. has over thirty years of commercial market experience in institutional organizations such as schools, colleges, hospitals, private and public housing complexes, condominiums and office complexes. We provide experienced on-site engineering for all installed products. All of our commercial sales projects are insured and most are bonded. All projects are installed by our own certified installers. We do not utilize subcontractors.

"Our commitment to our customers is to provide the most competitive price for a quality project in an acceptable time frame with outstanding customer service."

P.O. BOX 166, PASCOAG, RHODE ISLAND 02859 TEL: 401-568-3061 FAX: 401-568-7270