

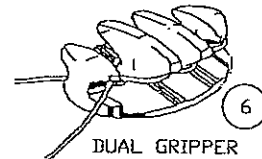
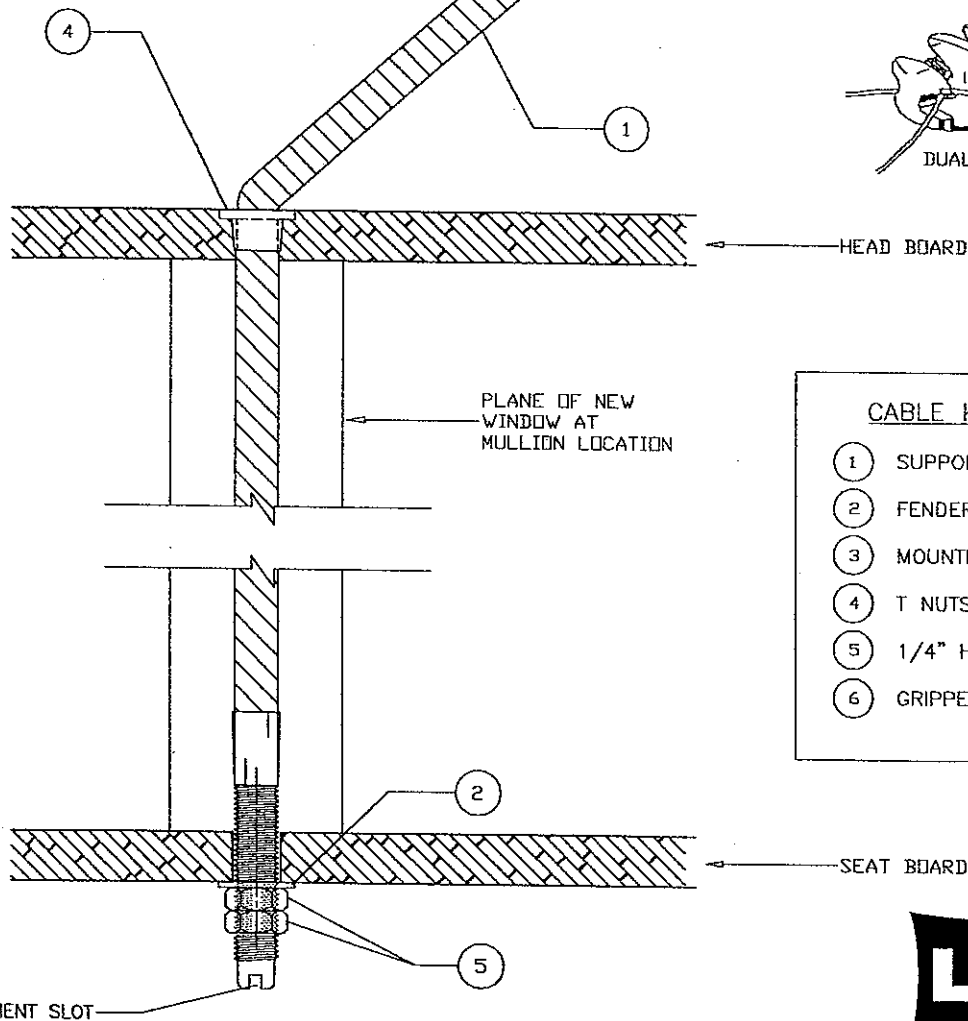
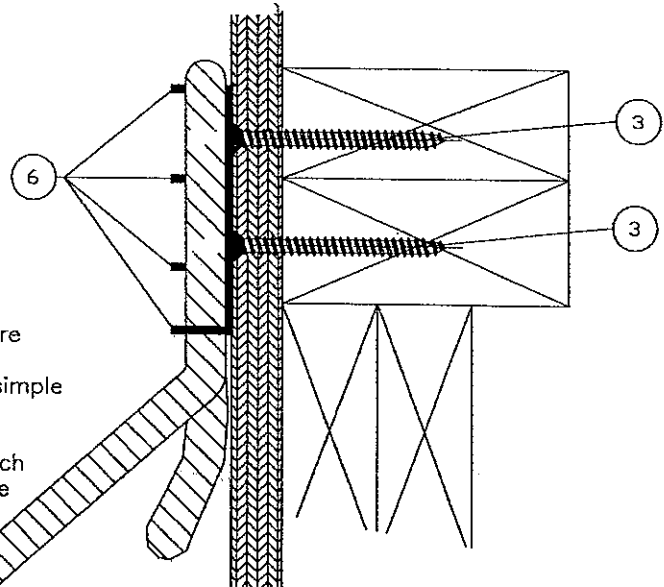
# BAY / BOW FACTORY INSTALLED CABLE SUPPORT INSTRUCTIONS

When you install bay and bow windows you need a support system that is:

- \* dependable
- \* strong
- \* easy to install

Our Cable Support System provides adjustable support for projecting window units. When installed this proven system distributes the window load to the solid structure portion of the building. Our Bay/Bow Support system also helps in leveling the unit during installation in a simple and easy to use manner.

Note: Cable Support Systems come fully installed in each unit when specified. Simply install the the gripper, route cables and adjust.



- | CABLE KIT INCLUDES |                            |
|--------------------|----------------------------|
| ①                  | SUPPORT CABLE ASSEMBLY (2) |
| ②                  | FENDER WASHER (2)          |
| ③                  | MOUNTING SCREWS (4)        |
| ④                  | T NUTS (2)                 |
| ⑤                  | 1/4" HEX NUTS (4)          |
| ⑥                  | GRIPPERS (2)               |

**Caution:** Always use additional means of supporting the window during installation of Support Systems.



**WINDOW CORP.**

Route 100, Pascoag, Rhode Island 02859

TEL: (401) 568-3061

FAX: (401) 568-2273

www.lockheedwindow.com