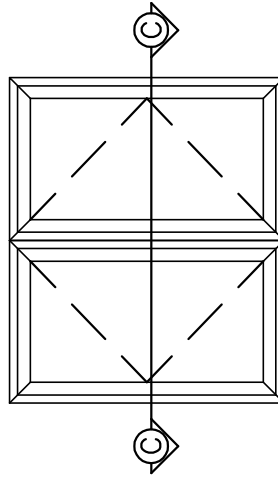


SECTION "C-C"
NOT TO SCALE



VinylPro 2000™
TWO-LITE CASEMENT
WELDED ASSEMBLY



WINDOW CORP.

Route 100, Pascoag, Rhode Island 02859

TEL: (401) 568-3061

FAX: (401) 568-2273

www.lockheedwindow.com

Form #743
Revised 4/04