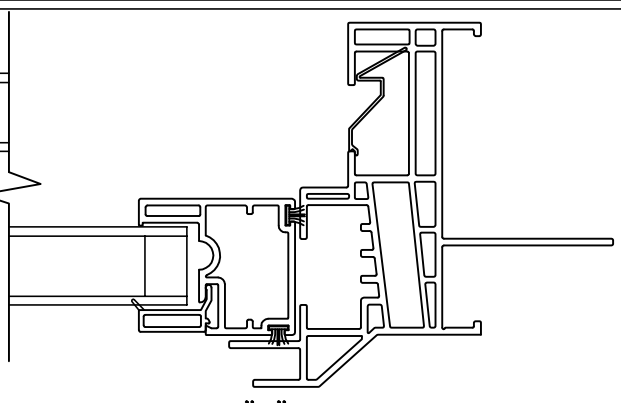
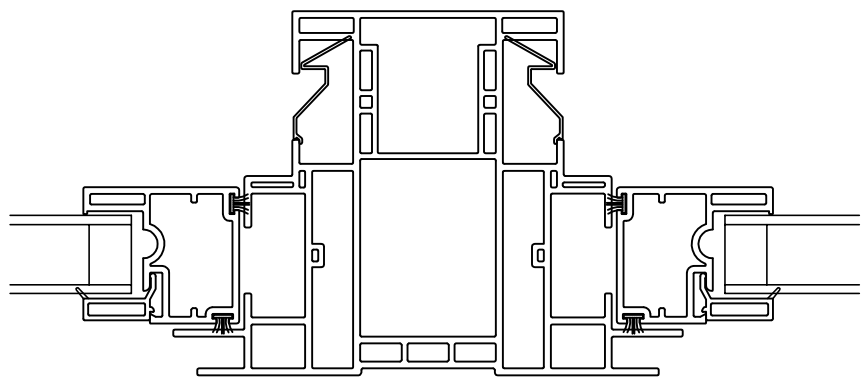
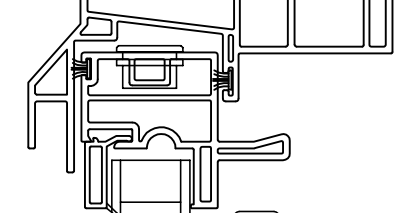
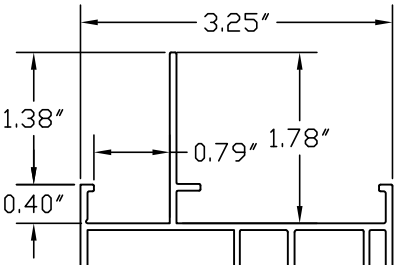


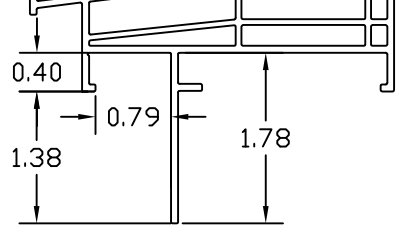
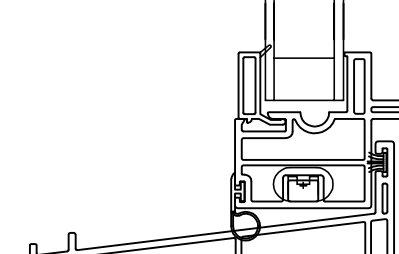
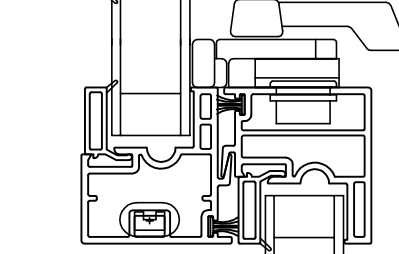
DETAIL "B"  
NOT TO SCALE



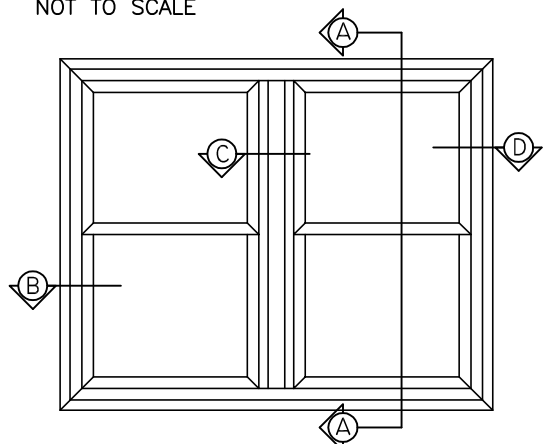
DETAIL "D"  
NOT TO SCALE



DETAIL "C"  
NOT TO SCALE



SECTION "A-A"  
NOT TO SCALE



NUCON<sup>®</sup>  
DOUBLE HUNG  
NEW CONSTRUCTION WINDOW  
WELDED ASSEMBLY

WITHOUT "J" CHANNEL  
WITH INTEGRAL MULLION



WINDOW CORP.

Route 100, Pascoag, Rhode Island 02859  
TEL: (401) 568-3061  
FAX: (401) 568-2273  
www.lockheedwindow.com

Form #525C  
Revised 9/08