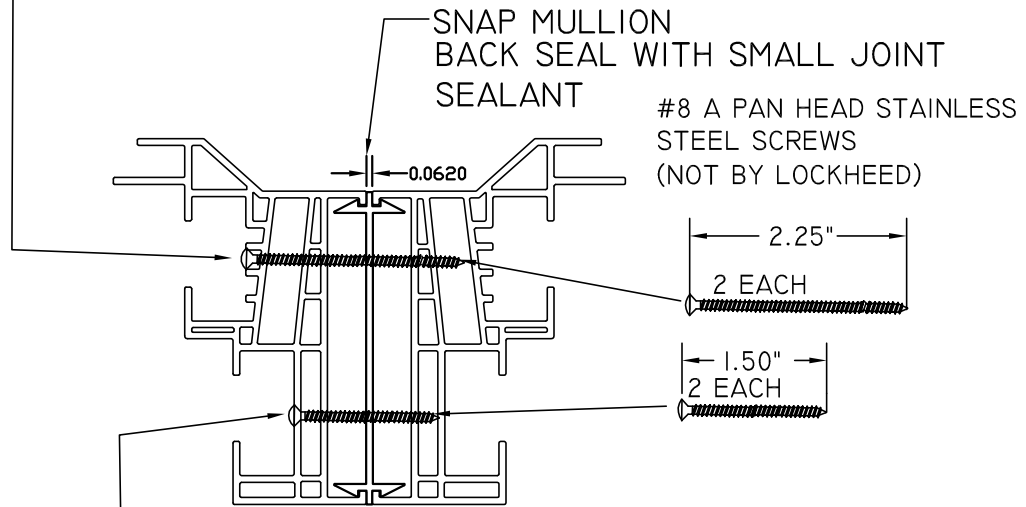


MULLING MONARCH™ DOUBLE HUNG REPLACEMENT WINDOWS UTILIZING A SNAP MULLION

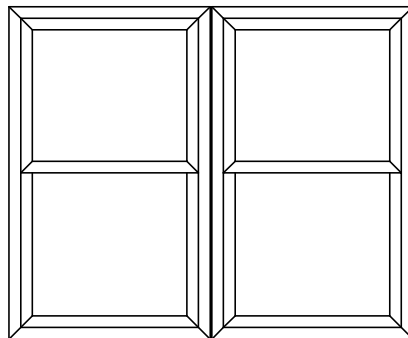
PLACE SCREW AT JAMB SILL SECTION INTO
FACTORY PREPUNCHED INSTALLATION HOLES



PLACE SCREW AT JAMB HEAD SECTION INTO FACTORY
PREPUNCHED INSTALLATION HOLE

REMOVE WAFER HEAD JAMB ADJUSTERS FROM EACH MULLED JAMB
AND PLACE SAME SCREW INTO FACTORY PREPUNCHED HOLE

THERE SHOULD BE A TOTAL OF FOUR SCREWS PER MULLION ASSEMBLY



ONE AT JAMB HEAD
TWO AT JAMB MIDPOINT
ONE AT JAMB SILL

NOT TO SCALE



WINDOW CORP.

Route 100, Pascoag, Rhode Island 02859
TEL: (401) 568-3061
FAX: (401) 568-2273
www.lockheedwindow.com

Form #680
Revised 5/06